

航管監視最低高度圖
ATC Surveillance
Minimum Altitude Chart

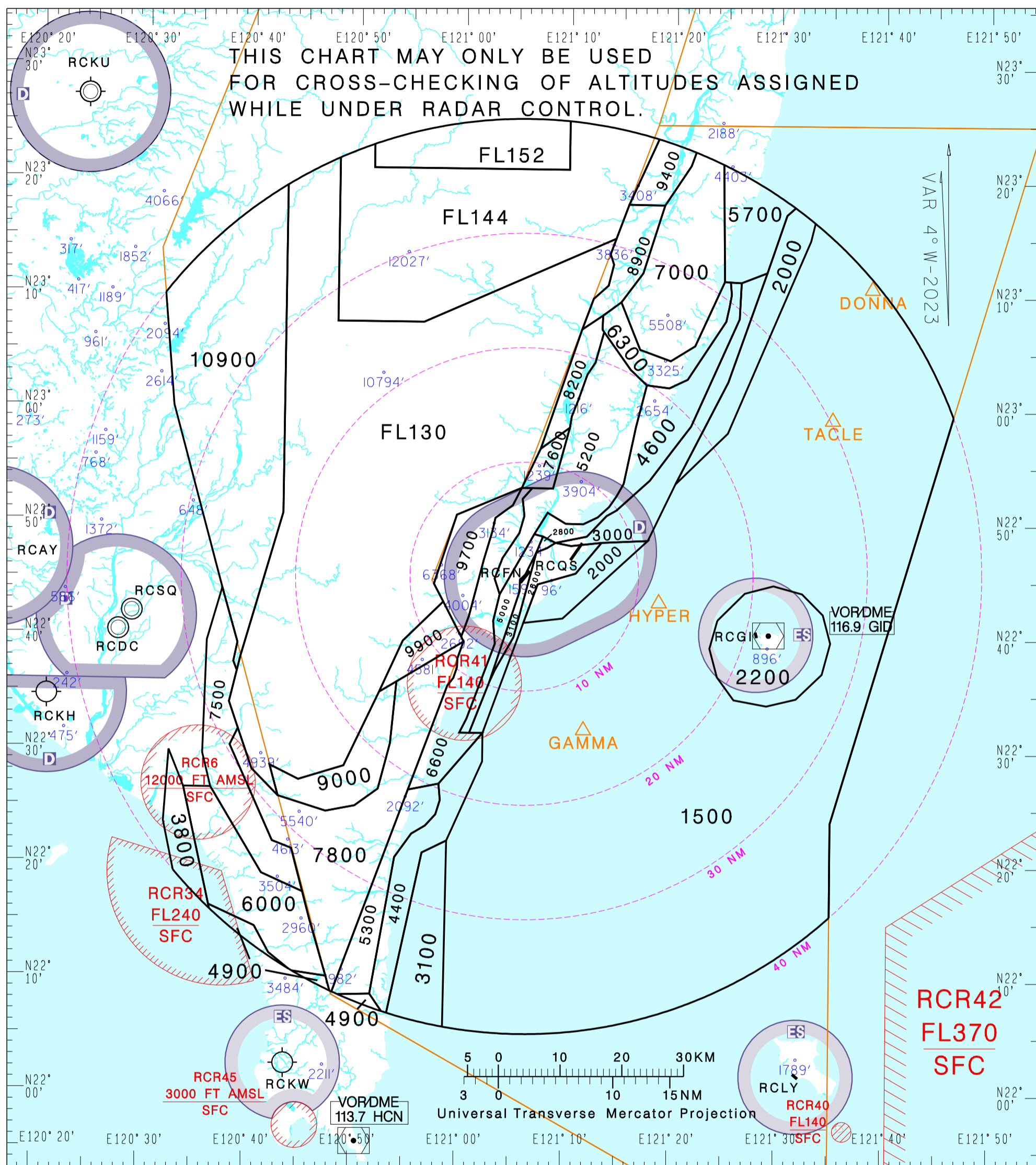
AD ELEV. Trans
RCFN 143 FT Level:FL130
RCGI 28 FT Alt:11,000'

KAOSHIUNG APP
119.4 228.2

FONGNIAN TWR
118.1
236.6
ATIS 127.0

LUDAO TWR
118.8

臺東/豐年機場 Taitung/Fongnian Aerodrome
綠島機場 Ludao Aerodrome



NOTE

- Distance circles are centred on RCFN ARP(224519N 1210601E).
- Minimum altitudes are calculated taking into account of minimum clearance above terrain/obstacles. Radar control service cannot be provided to aircraft below the applicable minimum. Aircraft at designated altitude in relevant sector is not assured of radar contact.
- Altitudes, Levels, Heights are in feet.
- Only significant spot heights are shown.
- LOSS OF COMMUNICATION
 - SQUAWK 7600 immediately, and
 - follow AIP ENR 1.6.4 "Radio Communication Failure Procedures."

CHANGES: RECHART